

TIRE & WHEEL INSPECTION (SERVICE TECH)



INTRODUCTION TO INSPECTIONS

PART 1 - TIRE CONDITIONS

PART 2 - WHEELS & ACCESSORIES

PART 3 - TYPES OF INSPECTIONS

Name _____

Store # _____

VALUE OF INSPECTIONS

Tires are subject to extreme forces

- 1) Road Conditions
- 2) Driving Styles
- 3) Weather



Why inspections are important

- 1) We inspect tires because we _____ about our customers and we want to keep them _____.
- 2) We are also _____ who like to share our expertise and knowledge with our customers.
- 3) We want to provide the best _____ possible so our customers leave with peace of mind.

Out of all the services we provide for our customers, the _____ is the most critical.

INSPECTION TOOLS

which is used to mark and identify hard to find conditions



which is used to measure the depth of the tread



for inspecting valve stems and the base of the valve



for rapidly deflating a tire with a potentially unsafe condition



to feel and look for irregularities



TREAD DEPTH



When we measure tread depth, we want to measure in the _____ groove, where the _____ are located.

We want to measure the _____, _____ and _____ of the tread.

When measuring tread depth with different measurements, use the _____ tread depth.

WEAR CONDITIONS

Wear Conditions - are _____ in the tread that are caused by a variety of different reasons.

Condition: _____



Cause: When a tire is _____-inflated.



When a tire is _____-inflated.



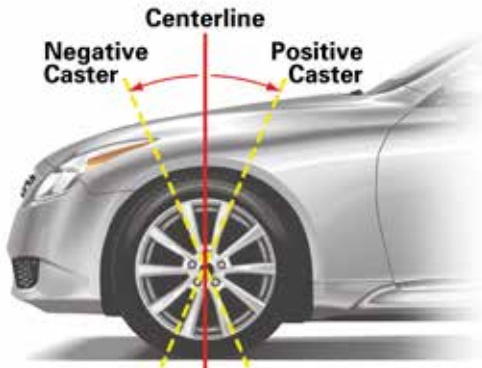
Typically found on vehicles with _____ or _____ suspension.



Due to _____ up brakes.

ALIGNMENT / MECHANICAL

Alignment is one of the key maintenance factors in getting the most wear and performance out of your tires.



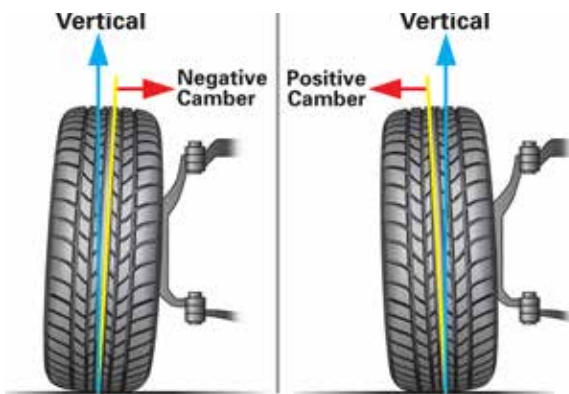
Caster is the _____ of the steering axis.

This can be _____ or _____.



Caster is important to steering response and high-speed stability.

If the caster is not aligned properly, it can result in excessive shoulder wear or tread block showing a "heel toe" wear pattern.



Camber is the _____ or _____ tilt of the tire.



If the camber is not aligned properly, it can result in premature "smooth wear" on the inside or outside shoulder.

ALIGNMENT / MECHANICAL CONT'D



Toe describes when the _____ of the tires are _____ or _____ apart than the _____ of the tires. This can be “toe in” or “toe out”.



If the toe is not aligned properly, it could result in a feathered wear pattern across the tread.



Ride Height is simply the _____ between the vehicle's _____ and the _____.



This is the reference point for all alignment measurements.



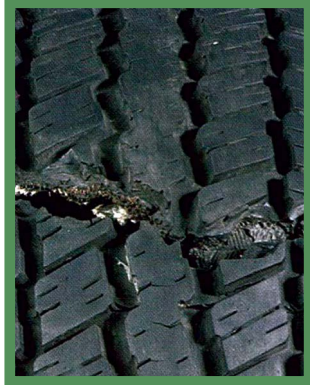
If a customer has altered their vehicle and is showing signs of alignment wear, you should _____ that they have their alignment checked.

TREAD CONDITIONS

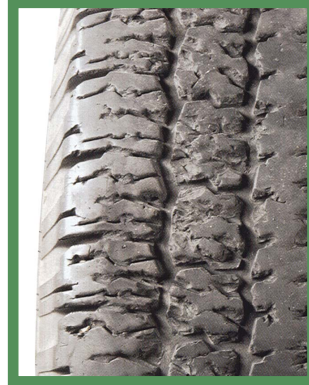
Condition: _____



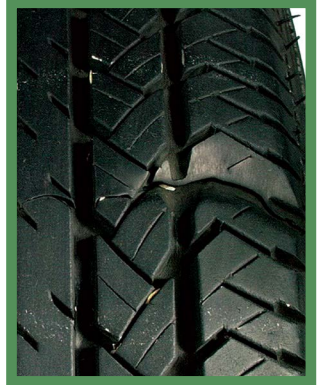
Cause: Due to long term exposure
to _____-inflation or
_____.



This is caused by _____
an object in the road.



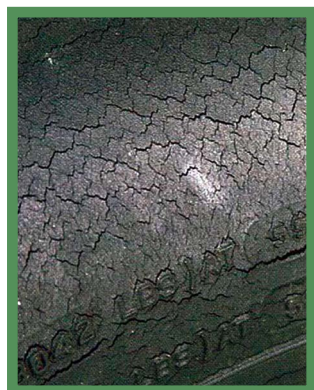
This is due to _____.
Example: driving _____ tires
on _____ roads.



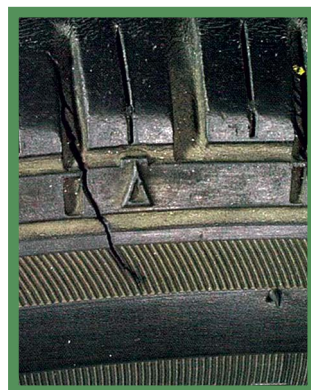
This is due to _____-inflation
and or _____-loading.
(Manufacturer Defect)

SHOULDER & SIDEWALL CONDITIONS

Condition: _____



Cause: Due to excessive exposure to
_____ and _____ rays.



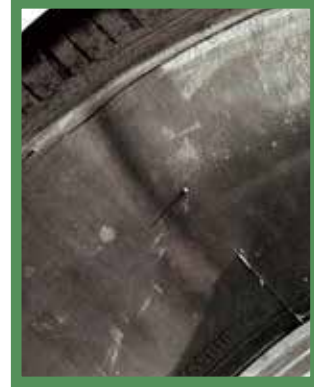
From _____-loading or a
misapplication.



Something impacting the tire
during _____.
(Manufacturer Defect)

SHOULDER & SIDEWALL CONT'D

Condition: _____



Cause: Due to _____-inflation.

Due to an _____ with an object in the road.

A _____ depression from storage over time.



Condition: _____

While driving, extreme forces and stress are applied to the belts edge. Because of this, most tire separations start here.

Should you discover this condition, you should rapidly _____ the tire, using a valve core remover.



Condition: _____

When a tire is over-loaded or run on flat, it causes the sidewalls to deflect. This builds up heat and causes deterioration of the innerliner and the body plies. When this happens, the internal construction of a tire is compromised.

If you discover this condition, you should _____ the tire and inspect the tire on the inside.

DOT INSPECTION



When looking at a DOT sequence, we are looking at the last _____ digits.

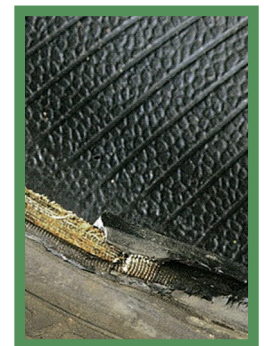


The DOT serial number may not be visible. In these cases, you should _____ on with your inspection.

If you do spot a tire that's _____ years old or older, you should notify the Service Coordinator.

BEAD CONDITIONS

Condition: _____



Cause: Occurs when the tire is _____-inflated.

Commonly found on tires that are _____-loaded.

_____ or _____ using the wrong equipment.

Typically happens while _____.

Occurs when the _____ is not properly _____ while changing a tires.

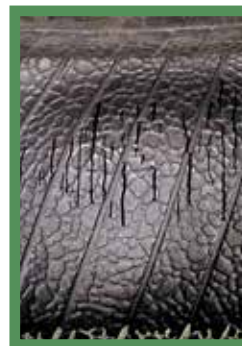
BEAD CONDITIONS CONT'D



Bead conditions can lead to tire failures during inflation.

INNERLINER CONDITIONS

Condition: _____



Cause: Occur because the tire _____
something in the road at high speeds.

Occur because the tire was run on _____ or _____-inflated.

INNERLINER CONDITIONS CONT'D

Condition: _____



As a best practice in these situations, you can run a towel or rag on the innerliner, to see if it gets snagged by a foreign object.



Tire spreader and light

WHEEL INSPECTION (PART 2 - WHEELS & ACCESORIES)



Inspect the face for:

- _____
- _____
- _____ damage



Inspect the rim flange for:

- _____ damage
- _____

WHEEL INSPECTION CONT'D



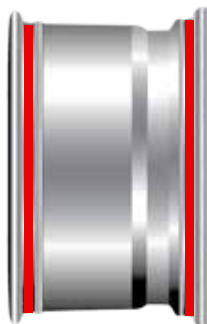
Inspect the lug seat for:

- _____ damage
- _____



Inspect the mounting surface for:

- _____



Inspect the bead seat for:

- _____
- _____



Inspect the valve hole for:

- _____
- _____

VALVE INSPECTION



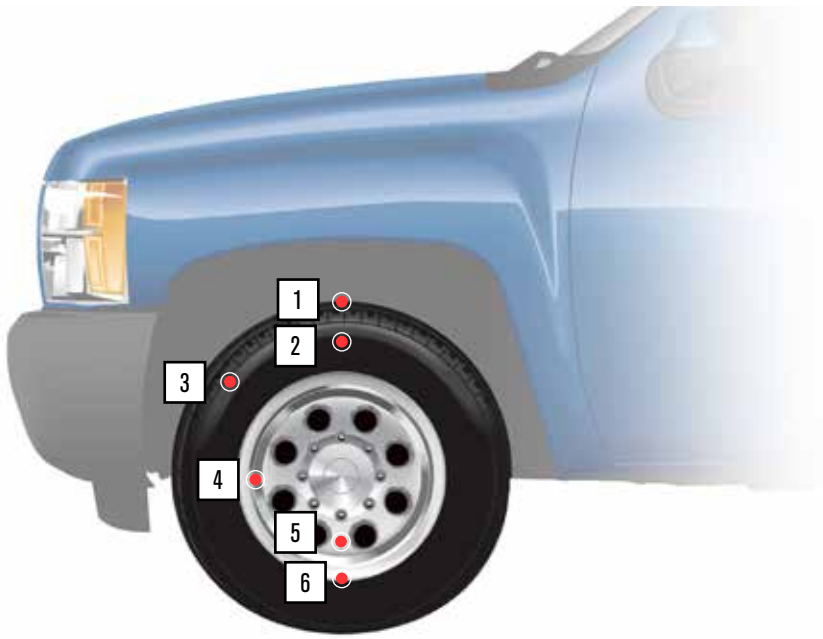
Valve Corrosion

Cracked Base

TPMS INSPECTION



ON THE VEHICLE



1. _____
2. _____
3. _____
4. _____
5. _____
6. _____

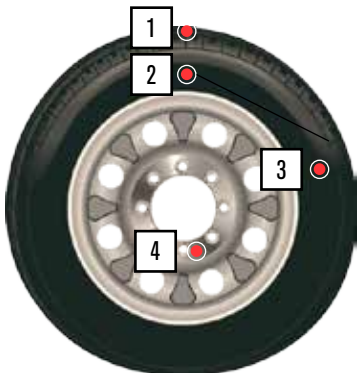
OFF THE VEHICLE

Front



1. _____
2. _____
3. _____
4. _____

Back

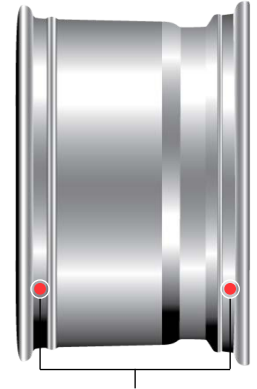


1. _____
2. _____
3. _____
4. _____

YOKO

100

Journal Pre-proof



Downloaded from <https://www.cambridge.org/core>. University of Cambridge, on 01 Jun 2020 at 10:00:00, subject to the Cambridge Core terms of use, available at <https://www.cambridge.org/core/terms>. <https://doi.org/10.1017/S0022216X20000509>

Provided by: Store Experience - Gary Ruede
 Designed by: Ashby - JCM

Published on: July 2010 ver 1.0
 ©2010 The Rainn Thomas Corporation, db/a Discount Tire

Provided by Stock-Exchange - Gary Hanks
Designed by Advertising - JSM
©2010 The Research Thomas Corporation. All Rights Reserved
Published on July 2010

<p> www.elsevier.com/locate/jmb www.elsevier.com/locate/jmb www.elsevier.com/locate/jmb </p>	<p> www.elsevier.com/locate/jmb www.elsevier.com/locate/jmb www.elsevier.com/locate/jmb </p>	<p> www.elsevier.com/locate/jmb www.elsevier.com/locate/jmb www.elsevier.com/locate/jmb </p>
---	---	---

Underutilization or Misalignment Impact with object in road Misclassification/Using object on highway Improper inflation/Excessive load Underinflation/Overloading High Impact/Overloading **and notify the service coordinator.**



SEE SOMETHING / SAY SOMETHING



**THERE ARE GOING TO BE TIMES YOU WILL SPOT A CONDITION THAT
WILL BE QUESTIONABLE. IN THESE CIRCUMSTANCES YOU SHOULD
NEVER TAKE A RISK; INSTEAD ASK FOR HELP FROM YOUR
_____ OR _____.**

IF YOU _____ SOMETHING _____ SOMETHING