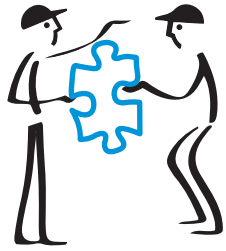


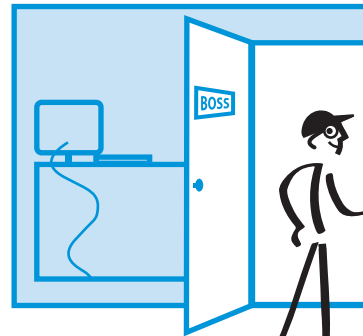
1



What do you think?  
Leader = teacher.



*SPEED OF TRUST*

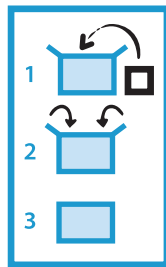
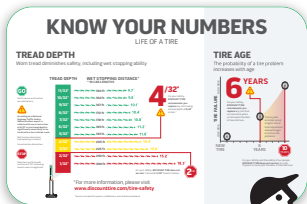


2

Go see for yourself.

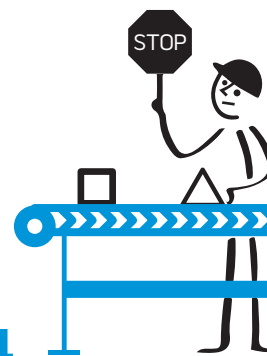


3  
PHASE  
CUSTOMER  
EXPERIENCE  
STRATEGY



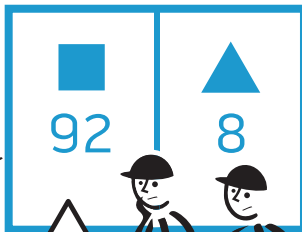
3

We have simple, visual standards  
for all important things.



4

Stop production so that production  
doesn't have to stop. *Don't ship junk.*

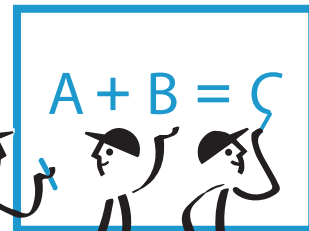


5

Make problems visible.



AOR



6

Everyone solves problems using  
simple scientific methods. PDCA

