

COMMON TIRE CONDITIONS

KEY: (A) L Adjustable - Return to manufacturer (STOP) Replace (Warning) Recommend replacement

Mark condition and notify the Service Coordinator.

TREAD CONDITIONS



Belt Edge Separation
Improper inflation/
Excessive load



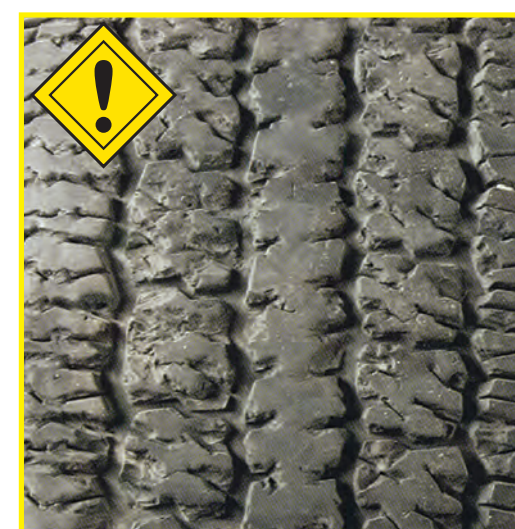
Open Tread Splice
Underinflation/
Overloading



Exposed Cords
Underinflation/
Misalignment



Impact Break
Impact with object
in road



Tread Chunking
Misapplication/Using
off-road on highway

CONDITIONS



Bead Cracking
Underinflation/
Overloading



Bead Separation
Excessive load/
Underinflation



Kinked Bead
 Mishandling during
shipping



Broken Bead
Improper mounting
procedures



Mounting Damage
Improper mounting
procedures

WEAR CONDITIONS



Alignment Wear
Misalignment



Center Wear
Overinflation for load
carried



Flat Spot
Brake lock/Skid



Irregular Wear
Belt separation/
Worn suspension

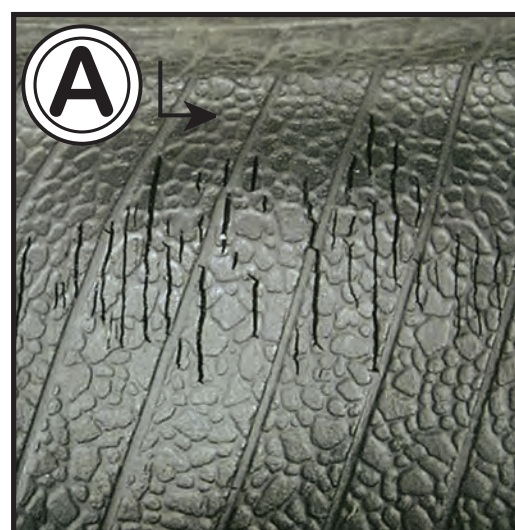


Underinflated
Improper inflation
pressure

INNERLINER CONDITIONS



Blistered Liner
Impact Damage



Liner Cracks
Tire abuse/
Underinflation



Liner Splice
Tire was run on flat

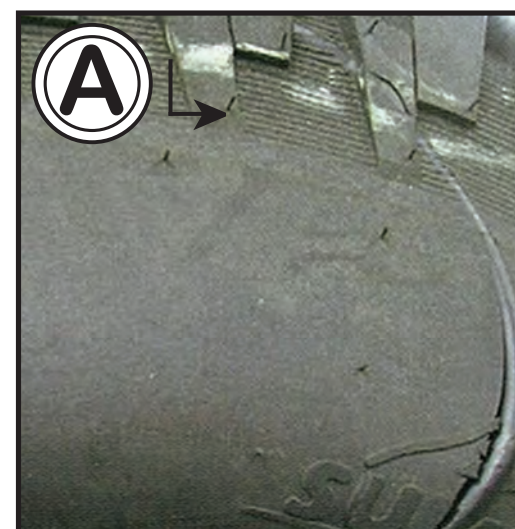


Cord Penetration
Tire was run on flat



Impact Break
Impact with object in
road

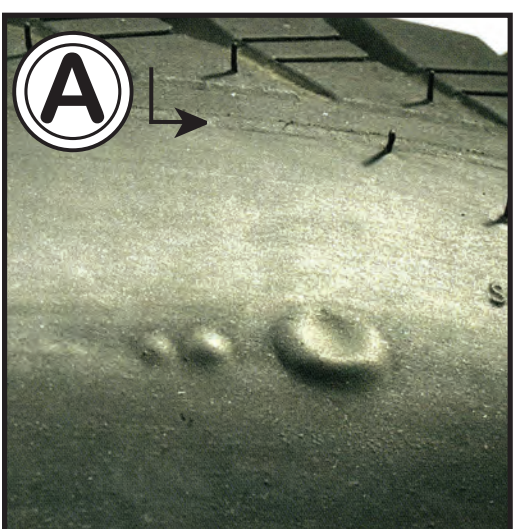
SHOULDER & SIDEWALL CONDITIONS



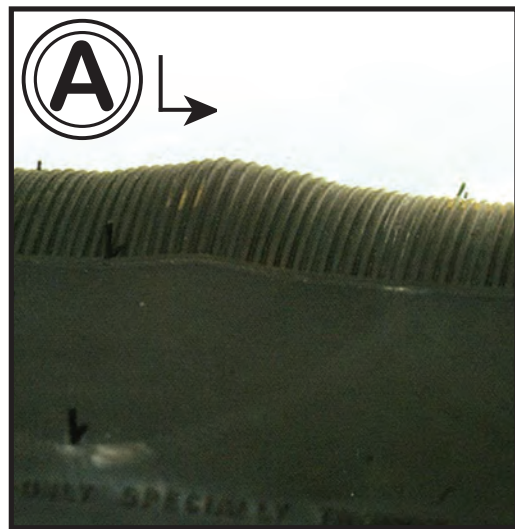
Foreign Material
Manufacturer defect



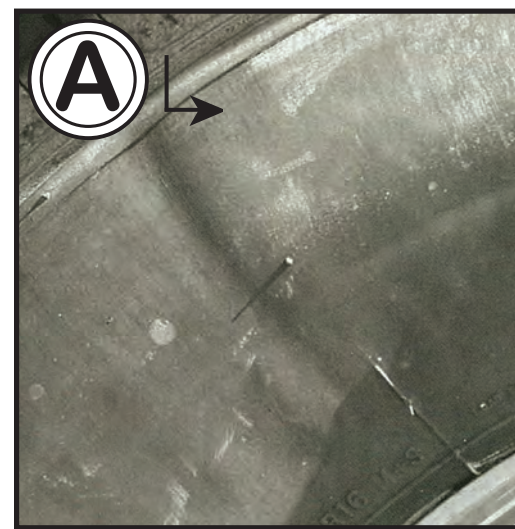
Ozone Cracking
Exposure to sunlight/
Excessive heat



Sidewall Blister
Underinflation/
Overloading



Sidewall Bulge
Impact with object in
road



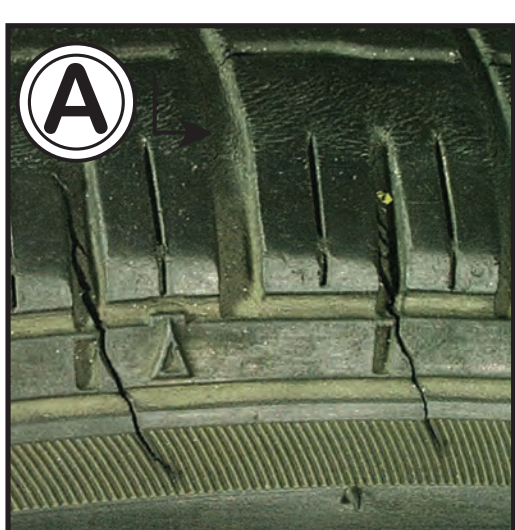
Sidewall Indentation
Cosmetic depression



Sidewall Separation
Impact damage/
Underinflation



Sidewall Splice
Underinflation/
Overloading



Torque Cracks
High torque/
Overloading



Heat Ring
Excessive load/
Tire was run on flat



Sidewall Impact Break
Impact with object in
road