



AMERICAN FORGE & FOUNDRY, INC.

MODEL 565E OPERATING MANUAL

22 Ton Air/Hydraulic Axle Jack

IMPORTANT: READ THESE INSTRUCTIONS AND ALL WARNINGS PRIOR TO USING THIS EQUIPMENT. UNDERSTAND ALL OPERATING PROCEDURES, SAFETY WARNINGS AND MAINTENANCE REQUIREMENTS. FAILURE TO DO SO COULD CAUSE AN ACCIDENT RESULTING IN SERIOUS OR FATAL INJURY AND/OR PERSONAL PROPERTY DAMAGE.

WARNING

The use of portable automotive lifting devices is subject to certain hazards that cannot be prevented by mechanical means, but only by exercise of intelligence, care, and common sense. It is therefore essential to have personnel involved in the use and operation of equipment who are careful, competent, trained, and qualified in the safe operation of this equipment and its proper use when servicing motor vehicles and their components. Examples of hazards are dropping, tipping, or slipping of motor vehicles or their components caused primarily by improperly securing loads, overloading, off-centered loads, use on other than hard level surfaces, and using equipment for a purpose for which it was not designed.

The owner and / or operator shall study and understand the product and the following safety instructions before operating this equipment. Safety information shall be emphasized and understood. If the operator is not fluent in English, the product and safety instructions shall be read to and discussed with the operator in the operator's native language by the purchaser / owner or his designee, making sure that the operator comprehends their contents. A copy of these instructions / warnings shall be retained for future reference.

- 1) Study, understand and follow all instructions before operating this device.
- 2) This jack is for lifting purposes only. Immediately after lifting, use jack stands of the correct capacity rating to support the vehicle.
- 3) Use only on a hard, level surface.
- 4) Do not exceed rated capacity.
- 5) Center load on saddle.
- 6) No alterations shall be made to this product.
- 7) Do not move or dolly the vehicle while on the jack.
- 8) Lift only areas of the vehicle as specified by the vehicle manufacturer.
- 9) Failure to heed these markings may result in personal injury and/or property damage.

ASSEMBLY

- 1) Connect two piece handle assembly, ensure that internal and external rods mate properly. Use screw provided to secure outer handle tube and cotter pin to secure external handle locator rod.
- 2) Loosen handle retaining bolt from yoke assembly. Insert handle assembly and handle locator rod into yoke assembly. NOTE: Rotate release knob at top of handle to ensure that the internal handle rod is engaged within the yoke assembly fully. Tighten handle retaining bolt on yoke assembly.
- 3) Extract air hose assembly from initial storage position and attach to top of handle.
- 4) Add a few drops of pneumatic tool lubricant into air valve assembly before using.

OPERATING INSTRUCTIONS

AIR PURGE

Sometimes during shipment and handling, air will get into the hydraulic system causing poor lifting performance. We recommend that you purge the air system before continuing to use the jack.

- 1) Open release valve by rotating release knob at top of handle counterclockwise two turns.
- 2) Remove oil filler plug on side of hydraulic unit. Be sure oil level is just below filler plug hole. Reinstall plug.
- 3) Depress the air valve for 30 seconds.
- 4) While the air motor is still running, close release valve by rotating release knob at top of handle clockwise until firm. Do not overtighten.
- 5) Depress air valve until ram is fully extended.
- 6) Repeat if necessary.

LIFTING

- 1) Secure the vehicle by chocking wheels and apply parking brake.
- 2) Refer to vehicle manufacturer's recommended lifting points and position jack accordingly, being sure that load is centered on saddle.
- 3) Rotate release valve clockwise until tight.
- 4) Lock handle position using one of the three position of the handle locator.
- 5) Attach air valve to suitable air source (90-175 psi). Depress air valve until saddle makes contact with recommended lifting point (be sure lifting point is aligned properly and safely). Raise load to desired height.
- 6) **WARNING:** During lifting, be sure load and jack are stable. If either appear to be unstable, stop lifting, lower load and reposition jack.
- 7) **IMMEDIATELY** after reaching desired height, secure load with appropriately rated safety stands (refer to vehicle manufacturer's recommended positioning).

LOWERING

- 1) Raise load high enough to remove safety stands.
- 2) **WARNING:** Be sure load does not shift or become unstable when lifting. If load is unstable, slowly lower load back on to the safety stands. Correct instability and start again.
- 3) Carefully remove safety stands.
- 4) Lower load slowly.

INSPECTION

Visual inspection shall be made before each use of this equipment, checking for abnormal conditions, such as cracked welds, leaks, damaged, loose or missing parts. This equipment shall be removed immediately from service if it is believed to have been subjected to an abnormal or shock load, the equipment shall be inspected by a qualified AFF repair facility. Owners and / or operators should be aware that repair of this equipment may require specialized knowledge and facilities. It is recommended that this equipment be inspected annually by a qualified repair facility. Defective parts, decals, safety labels or signs should be replaced with AFF specified parts.

MAINTENANCE

- 1) Depending upon usage, periodically add a few drops of pneumatic tool oil to air inlet and extension screw.
- 2) Check hydraulic fluid level regularly and only fill with high-grade hydraulic fluid.
- 3) Store unit in fully retracted position to avoid rusting of lift piston.
- 4) Grease the extension screw with a general purpose grease.
- 5) Keep saddle area clean and free of grease or dirt.
- 6) Check the color of the desiccant material in the disposable in-line filter/dryer on the air hose. Replace filter if the material is light or transparent in color. Do not attempt to clean the filter.
- 7) Empty water separator on the air source daily to prevent air supply contamination.

TROUBLESHOOTING

The Model 565E is a fully-tested and dependable axle jack. Should a problem occur, do not return this jack to its point of purchase. Follow the troubleshooting steps listed below to quickly return your jack to service. If you need assistance, call AFF Service at (800) 255-0555 between 8:30 am and 5:00 pm EDT for help.

PROBLEM

CHECK FOR:

Jack fails to operate on first try or operates slow or irregularly

Air in hydraulic system during shipment. See Air Purge instructions on page 2

Air passes through jack but air motor does not operate

Sufficient air pressure (at least 80 psi)
Torn or damaged air hose
Cracked/broken in-line filter
Stuck throttle rod (Remove the back cover of the air motor to expose the throttle rod. Inject a few drops of pneumatic tool oil and work the rod until free. Rod travel should be approximately one inch.)

Air motor operates but jack does not lift

Reinstall handle to make sure release valve is operating correctly
Examine yoke to observe that release valve is turning
Air in hydraulic system. Run jack for 2-3 minutes with release valve open to remove air.
Check oil level in hydraulic system. Fill with high-grade hydraulic fluid if low.

Jack lifts less than full load

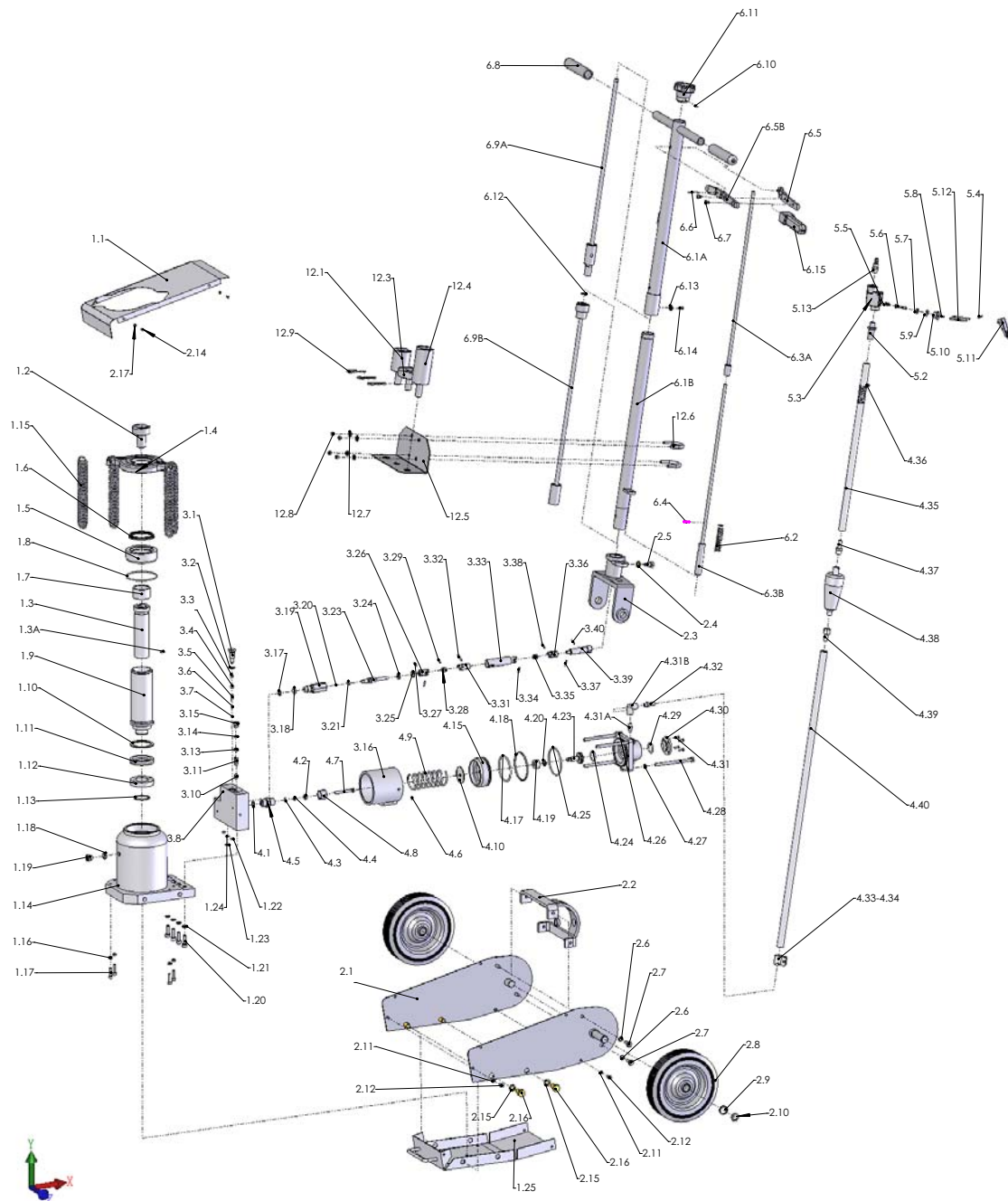
Check oil level in hydraulic system. Fill with high-grade hydraulic fluid if low.
Be sure release valve is fully closed. Turn handle knob clockwise until it stops.
Release valve linkage binding.
Kinked or damaged air line
Leaking hydraulic ram

PARTS AND SERVICE

AFF stocks a wide variety of replacement parts for this model. You can also view a schematic and parts list on our web site at www.affjaxx.com.

Should your jack need professional attention, there are over 250 AFF service depots available to handle your service needs. You can find the service depot closest to you by visiting our web site at www.affjaxx.com.

MODEL 565E SCHEMATIC



PARTS LIST

1.1	Cover	3.37	Spring pin
1.2	Saddle	3.38	Spring pin
1.3	Extension screw	3.39	Connecting axle
1.3A	Spring pin	3.40	Spring pin
1.4	Spring support	4.1	Packing
1.5	Screw bushing	4.2	Plunger cover
1.6	Y-shape seal ring	4.3	O-ring
1.7	Head nut	4.4	Seal ring
1.8	O-ring	4.5	Plug bushing
1.9	Piston rod	4.6	O-ring
1.10	Stop ring	4.7	Plug
1.11	U-shaped seal ring	4.8	Cap
1.12	Piston head	4.9	Spring
1.13	Elastic stop ring	4.10	Spring holder
1.14	Cylinder base	4.15	Piston
1.15	Spring	4.17	O-ring
1.16	Nut	4.18	Seal ring
1.17	Screw	4.19	Seal throttle
1.18	O-ring	4.20	Washer
1.19	Screw	4.23	Throttle rod
1.20	Screw	4.24	O-ring
1.21	Washer	4.25	O-ring
1.22	O-ring	4.26	Air pump body
1.23	O-ring	4.27	Washer
1.24	O-ring	4.28	Bolt
1.25	Chassis base	4.29	O-ring
2.1	Side plate	4.30	Back cover
2.2	Angle bracket	4.31	Screw
2.3	Handle fork	4.31A	Screw tube
2.4	Washer	4.31B	Elbow joint
2.5	Fastening screw	4.32	Union
2.6	Washer	4.33	Spiral clamp ring
2.7	Bolt	4.34	Screw
2.8	Wheel	4.35	Rubber hose
2.9	Washer	4.36	Spring
2.10	Track ring	4.37	Connector
2.11	Washer	4.38	Dry filter
2.12	Screw	4.39	Connector
2.14	Screw	4.40	Rubber hose
2.15	Washer	5.2	Filter nozzle
2.16	Bolt	5.3	Case
2.17	Washer	5.4	Pin
3.1	Screw	5.5	Spring
3.2	Washer	5.6	Piston rod
3.3	Spring	5.7	Seal ring
3.4	Steel ball	5.8	O-ring
3.5	Valve core	5.9	O-ring
3.6	Spring	5.10	Throttle
3.7	Steel ball	5.11	Handle cover
3.8	Cylinder base	5.12	Locking spring
3.9	Steel ball	5.13	Union
3.10	Valve	6.1A/B	Outside tube (2 parts)
3.11	Spring	6.2	Spring
3.13	Screw	6.3A/B	Adjustable rod
3.14	O-ring	6.4	Split pin
3.15	Screw	6.5	Lock lever
3.16	Body	6.6	Spring pin
3.17	Washer	6.7	Screw
3.18	O-ring	6.8	Handle
3.19	Release valve body	6.9A/B	Control rod (2 parts)
3.20	Steel ball	6.10	Spring pin
3.21	O-ring	6.11	Knob
3.23	Release valve	6.12	Retaining ring
3.24	Washer	6.13	Spring washer
3.25	Stop ring	6.14	Bolt
3.26	Fork axle with hole	6.15	Handle cap
3.27	Steel wire	12.1	Adaptop-A
3.28	Connecting block	12.3	Adaptop-C
3.29	Spring pin	12.4	Adaptop-D
3.30	Spring pin	12.5	Holder adaptor
3.31	Fork axle	12.6	U-bolt
3.32	Pin		
3.33	Joint		
3.34	Steel wire		
3.35	Connecting block		
3.36	Fork axle with hole		

NOTES



AMERICAN FORGE & FOUNDRY, INC.

1 YEAR LIMITED WARRANTY

AMERICAN FORGE & FOUNDRY, INC. WARRANTS, to the final purchaser, jacks and related service equipment distributed by it to be free from defects in material and workmanship for a period of 1 year from date of sale. This warranty covers American Forge & Foundry, Maximum and Viking products.

If a jack or related equipment is determined to be defective during the warranty period, it will be repaired or replaced without charge provided that the equipment is shipped, transportation charges prepaid, with proof of purchase, to American Forge & Foundry, Inc. or to a designated field service depot.

This warranty does not apply to parts damaged from accident, overload, or abuse, nor does it apply to product which has been altered or used with special attachments other than recommended by the distributor or equivalent.

THERE ARE NO OTHER WARRANTIES OF ANY SORT, EXPRESS OR IMPLIED, AND SELLER SPECIFICALLY DISCLAIMS ANY WARRANTY OF MERCHANTABILITY OR OF FITNESS FOR ANY PARTICULAR PURPOSE. THE SELLER'S SOLE OBLIGATION, WHICH SHALL REPRESENT THE BUYER'S SOLE EXCLUSIVE REMEDY, SHALL BE TO REPAIR OR AT THE SELLER'S OPTION TO REPLACE ANY PRODUCT OR PART DETERMINED TO BE DEFECTIVE AS AFORESAID. IN NO EVENT SHALL THE SELLER BE LIABLE FOR ANY SPECIAL, DIRECT, INDIRECT, INCIDENTAL, CONSEQUENTIAL OR OTHER DAMAGES OF A SIMILAR NATURE, INCLUDING, WITHOUT LIMITATION, LOSS OF PROFITS OR OF PRODUCTION TIME, OR LOSS OR EXPENSES OF ANY NATURE, INCURRED BY THE BUYER OR ANY THIRD PARTY.

For warranty information, call American Forge & Foundry toll-free at (800)255-0555

American Forge & Foundry, Inc. • P.O. Box 59 • Guilderland Center, NY 12085