

SAFETY FOCUS

MARCH 2021



LET'S GET YOU TAKEN CARE OF®

FACILITIES

This year, we will be working with you to encourage safety participation from everyone at your location. To do this, you will have your own Facilities safety specific topics.

ACTION ITEMS

- Complete the DTU training
- Review and share the safety topic with your people
- Leave feedback



INSTRUCTIONS

In the next pages, you will see DTU Extended Learning training modules as well as a safety topic for the month. ➤

We have included these safety topics as they pertain to you and your people.

- 1** Print out this Focus, review the information, and **complete the action items**.
- 2** Each section has action items to help you and your team completed this Safety Focus. **Review each section carefully.**
- 3** Each Safety Leader will need to **complete the DTU training module** for the month. You will be required to complete a course test following the training module.
- 4** Once all the action items are completed, **have a group discussion** about your findings and answer your feedback questions as a team.



FEEDBACK ON THIS MONTH'S TOPIC

All feedback must be submitted through the Safety Feedback Portal.

Safety Leader: You will find the feedback questions at the end of this Safety Focus.

CONTINUE TO PAGE 2 ➤



RETAIL SAFETY DTU EXTENDED LEARNING

This month's course is on Retail Safety. The retail sector is one of the largest employers in the world. From brick-and-mortar stores to online sales to large service centers, modern retailers occupy a wide range of business premises. With so many people working in the industry, in such a diverse variety of workplaces, health and safety in the workplace must be a priority for employers and employees.

Follow the instructions below to log in and complete your DTU Extended Learning training module.

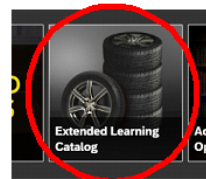


Log in to the DTU Extended Learning Catalog:

- Log in to DTU on the Knowledge Center.
- Locate the Extended Learning Catalog.



For **first time logging in to the Extended Learning Catalog**, follow the instructions by [clicking here](#)

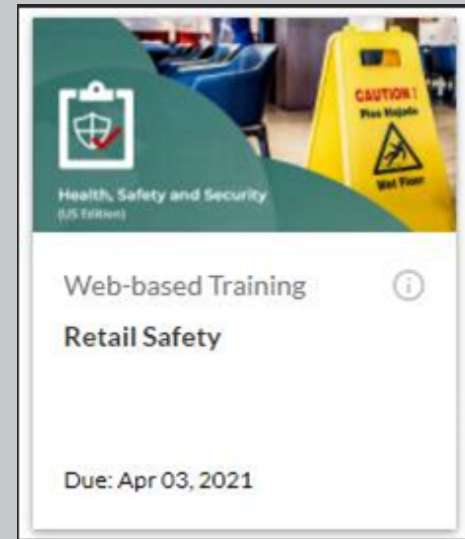


- Click on View Compliance and select your training module.

If you have any questions during the login process, please contact dtu_learning@discounttire.com

▶ Complete the Training Module:

- Complete the **Retail Safety** training module.
- After completing the training module, you will be required to **complete a course test**.
- **Share the information** with your people.





HAZARD CHEMICAL COMMUNICATION

The OSHA Hazard Communication Standard is designed to inform employees of hazardous chemicals, health and safety hazards, and appropriate protective measures. This month's topic will include Safety Data Sheets and where to find them, proper labelling of chemical containers, and awareness pieces such as the GHS poster and GHS safety short.

Review and Share:

Review the Hazard Communication items below with your team

- Safety Data Sheet (SDS) – The SDS can be found on the main KC page under Helpful Links and on the Safety Page. Everyone should know where the SDS is located and how to access it.
- GHS Poster – Review the information on the GHS poster. If you need a replacement, please order from [DTPrints](#) Username: store name (i.e. AZP99) Password: Discount1



Inspect Your Chemical Containers:

Inspect all chemicals and ensure they have the proper label attached to the container. Should you have a secondary container, make sure that they are labeled appropriately.

If you need to print out a label, follow the steps below:

1. Go to the SDS link and find the product for the label you need
2. Click the label icon, then the GHS Work Place icon
3. Choose the Avery 5164 Large Type and print
4. Attach the label using clear packing tape to the container

Secondary Container	Summary/Hazard	Flags	Product Name/Synonym
			A-100 Exterior Acrylic Latex

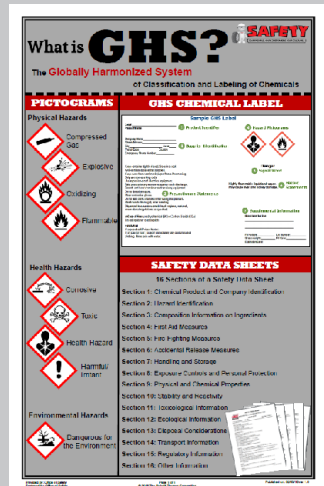


Print Labels From To

☒ PPE as Text



Product Name A-100 Exterior Acrylic Latex Flat Extra White (A6W151)	
SDS ID: SDS0001	
Signal Word Danger	
Manufacturer: The Sherwin-Williams Company 101 W. Prospect Avenue Cleveland, OH 44115 USA	
PPE Required: See SDS or Department Procedure for more details.	



FEEDBACK ON THIS MONTH'S TOPIC

1. Did you find the information in the training module beneficial? How will you apply what you learned about retail safety?
2. How many chemical containers did you find that were unlabeled? How will you ensure that every chemical container has a label, especially when using secondary containers?