

SAFETY FOCUS

SEPTEMBER 2021



LET'S GET YOU TAKEN CARE OF®

DISTRIBUTION CENTERS

This year, we will be working with you to encourage safety participation from everyone at your Distribution Center. To do this, you will have your own DC safety specific topics.

ACTION ITEMS

- Complete the DTU training
- Review and share the safety topic with your people
- Leave feedback



INSTRUCTIONS

In the next pages, you will see DTU Extended Learning training modules as well as a safety topic for the month. ➤

We have included these safety topics as they pertain to you and your people.

- 1** Print out this Focus, review the information, and **complete the action items**.
- 2** Each section has action items to help you and your team complete this Safety Focus. **Review each section carefully.**
- 3** Each Safety Leader will need to **complete the DTU training module** for the month. You will be required to complete a course test following the training module.
- 4** Once all the action items are completed, **have a group discussion** about your findings and answer your feedback questions as a team.



Total Recordable Incident Rate

TRIR is the number of work-related injuries per 100 full-time workers.

A recordable injury is one that's more serious requiring treatment beyond first aid.

Month_Year	TRIR_YOY
JUL 2020	17.66
JUL 2021	0

TRIR can be used on its own to look at the organization's past safety performance: the lower the number, the better.

FEEDBACK ON THIS MONTH'S TOPIC

All feedback must be submitted through the Safety Feedback Portal.

Safety Leader: You will find the feedback questions at the end of this Safety Focus.

CONTINUE TO PAGE 2 ➤



ELECTRIC PALLET JACK SAFETY DTU EXTENDED LEARNING

This course is intended for all employees who use electric pallet jacks and other powered industrial trucks or anyone who might be exposed to the hazards associated with powered industrial truck usage in the workplace.

Follow the instructions below to log in and complete your DTU Extended Learning training module.

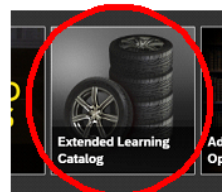


Log in to the DTU Extended Learning Catalog:

- Log in to DTU on the Knowledge Center
- Locate the Extended Learning Catalog



For **first time logging in to the Extended Learning Catalog**, follow the instructions by [clicking here](#)



- Click on View Compliance and select your training module

If you have any questions during the login process, please contact dtu_learning@discounttire.com



Complete the Training Module:

- Complete the **Electric Pallet Jack Safety** training module
- After completing the training module, you will be required to **complete a course test**
- **Share the information** with your people



DTU Acknowledgement:

- After reviewing the monthly training module with your people, have them log into their DTU and complete the **Electric Pallet Jack Safety** acknowledgement



Web-based Training



Electric Pallet Jack Safety

Due: Oct 02, 2021



SAFETY & QUALITY FOCUSED | September 2021

You have 3 action items; follow the instructions below to complete.

- 1** Go to the Safety & Quality Focused page on the KC. Remind all your people to watch the SQF video and take the short assessment. This video is for EVERYONE from Service Tech to Store Manager.

Sprains & Strains

(Best Practices, Safety & Injury Awareness)



Safety & Quality Focused



Scan to enter the voluntary contest for a chance to win!

- 2** Remind all managers to watch the MF video and take the short assessment. This video is for MANAGERS ONLY (Assistants, Seniors, and Store Managers).

Managing With Clear Roles & Expectations

(Tips from Store Managers)



Manager Focused



Scan to enter the voluntary contest for a chance to win!

- 3** Hang up all September materials as soon as they arrive. If you are missing your materials or need new plastic poster frames, scan this green QR code to order replacement materials.

Poster & Frame Order Form



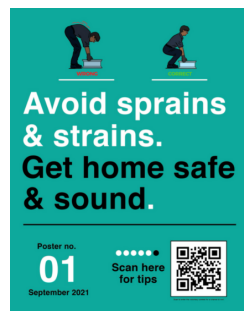
Large poster



Manager's Mini Poster



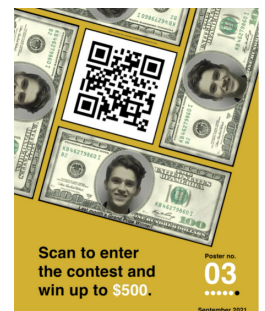
Mini Poster



Mini Poster



Mini Poster



FEEDBACK ON THIS MONTH'S TOPIC

1. Did you find the information in the training module beneficial? How will you apply what you learned about electric pallet jack safety?
2. How will you and your people apply what you saw in the Sprains & Strains video to your daily routine?