

SAFETY FOCUS

LET'S GET YOU TAKEN CARE OF[®]

NOVEMBER 2022

DISTRIBUTION CENTERS

This year, we will be working with you to encourage safety participation from everyone at your location.

ACTION ITEMS

- 1 Complete the DTU training
- 2 Review and share the safety topic with your people
- 3 Leave feedback



INSTRUCTIONS

- 1 Print out this Focus, review the information, and **complete the action items**.
- 2 Each section has action items to help you and your team complete this Safety Focus. **Review each section carefully.**
- 3 The Safety Leader will need to **complete the DTU training module** for the month. You will be required to complete a course test following the training module.
- 4 Once all the action items are completed, **have a group discussion** about your findings and answer your feedback questions as a team.

FEEDBACK ON THIS MONTH'S TOPIC

All feedback must be submitted through the Safety Feedback Portal.

Safety Leader: You will find the feedback questions at the end of this Safety Focus.

CONTINUE TO PAGE 2 >



Electrical Safety: Common Hazards In The Workplace

Electricity is widely recognized as a serious workplace hazard today. Employees get exposed to electric shock, burns, and fire each day. It is largely known that the human body conducts electricity. When direct body contact is made with a conductive surface a current will enter and exit at another contact point.

3 Types of Burns

- **Electrical** - Current flowing in the tissues, and can be either skin deep or deeper
- **Arc** - High temperature produced by electric arcs
- **Thermal** - Skin contact on hot surfaces of overheated electric conductors or other energized equipment

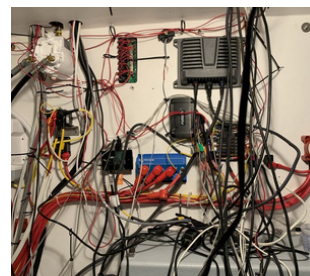
In-Store Hazards to Look For



Damaged Extension Cords



Broken Faceplates



Messy Wiring

Nature of Electrical Accidents

Unsafe Electric Equipment - Faulty insulation, improper grounding, loose connections, defective parts, ground faults in equipment, unguarded live parts, and underrated equipment

Unsafe By Environment - Containing flammable vapors, liquids, or gases; areas containing corrosive atmospheres; and wet and damp locations

Unsafe Acts - Failure to de-energize electric equipment when it is being repaired or inspected or the use of tools or equipment too close to energized parts

(Control of Hazardous Energy - Lockout/Tagout)

A weekly Close Call Winner!

As an incentive for our people to report more Close Calls, everyone who reports a Close Call is entered into a drawing to win a \$50 gift card. One lucky winner is chosen weekly.



The more you report Close Calls, the higher chance you will have to win.

CONTINUE TO PAGE 3 >



DTU: Cold Stress

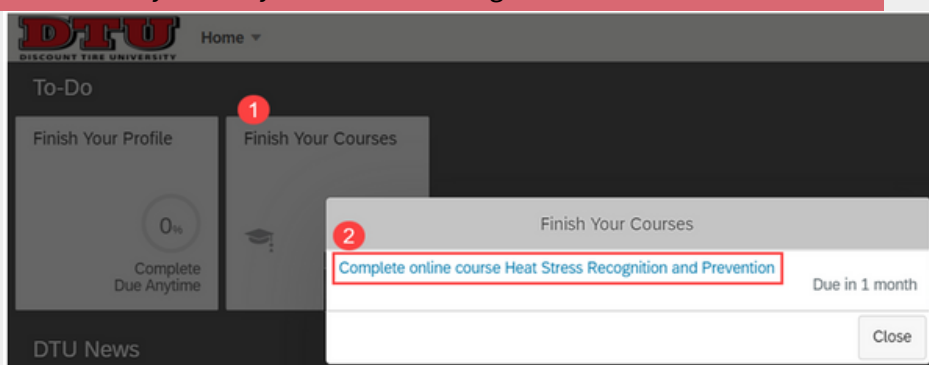
This course will discuss the effects of cold on your body, outline the risk factors for cold-related ailments, and describe the associated treatments for each. Several preventive measure techniques and safe work practices that you can use to protect yourself from cold-related stresses will also be reviewed.

NEW WAY TO ACCESS THE TRAINING MODULES

This month, you will be accessing the course through DTU. Managers and Senior Assistant Managers will both access the course assignments (safety course and acknowledgements) from the **DTU learning system To Do list**.

Below, you will see an example of how this assignment will look:

1. Log into the DTU learning system using your employee ID and Okta/Windows login. On the homepage, click Finish Your Courses.
2. Click the name of the safety course you have been assigned.



Call to action: Complete the **DTU: Cold Stress** training module and share what you learned with your people.

Contact dtu_learning@discounttire.com for troubleshooting.

FEEDBACK ON THIS MONTH'S TOPIC

1. What did you learn from the DTU: Cold Stress training module?