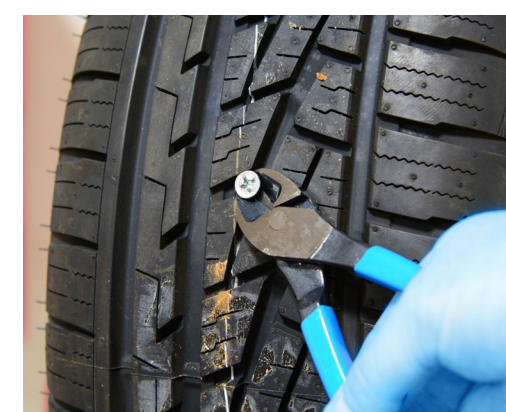


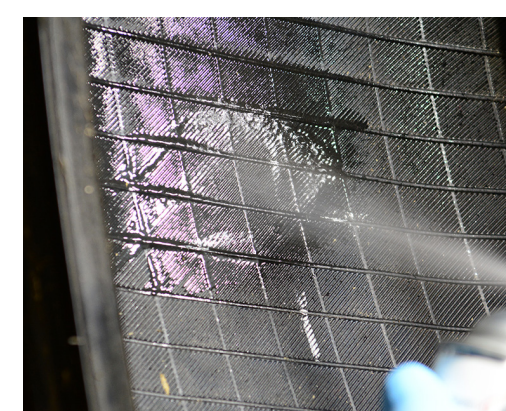
TIRE REPAIR PROCESS



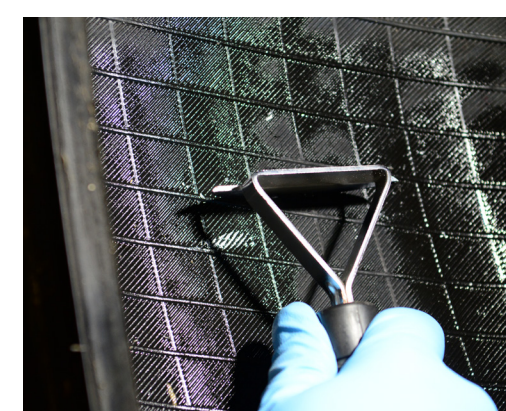
1. Use the appropriate tool (for example, pliers or screwdriver) to remove the foreign object.
Remember, never use an awl to remove the object.



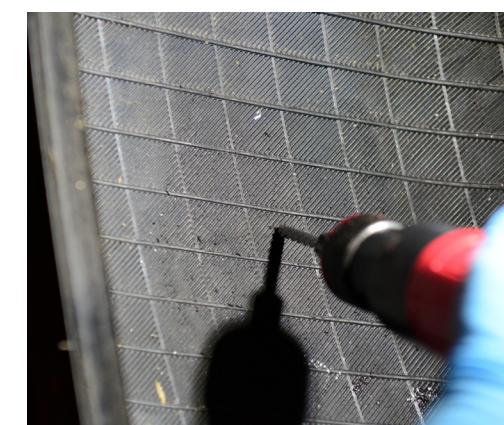
2. Inspect and probe the injury with an awl to determine the extent of the damage and the angle of the injury channel.



3. Spray the injured area with the pre-buff cleaner.



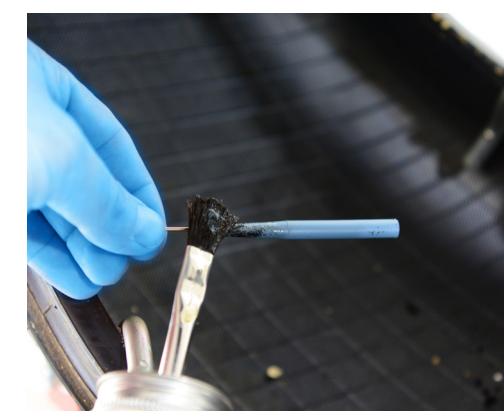
4. With the innerliner scraper, clean and scrape the injured area.



5. Use the carbide cutter to ream the injury **3-4 times from the outside in and inside out.**
Remember, use full strokes with the carbide cutter, completely removing the cutter from the tire with each stroke.



6. Remove the plug stem from the plastic packaging.



7. Fully coat the plug stem with quick dry patch cement.



8. Use pliers to pull the plug stem through the injury.



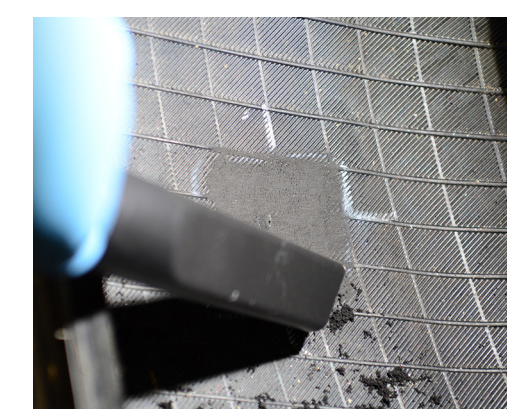
9. Use the diagonal cutter to cut the plug stem 1/8" above the innerliner.



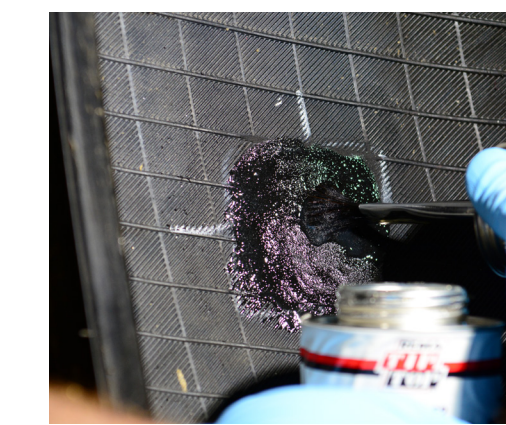
10. Use the contour rasp to buff the plug stem flush with the innerliner. Then, buff the area several times in one direction to get a patch area of about 3" x 3".



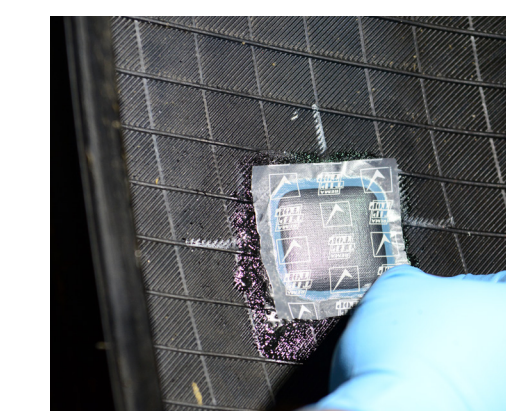
11. Use the brass brush to smooth the buffed patch area to a black, velvet-like texture.



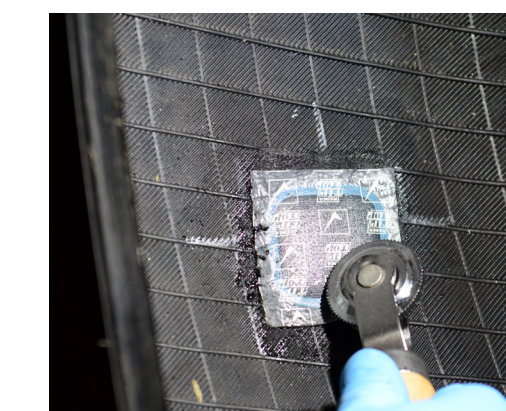
12. Use a vacuum to remove all debris from the inside of the tire.
Remember, to avoid contamination, do not touch the buffed area with the tip of the vacuum.



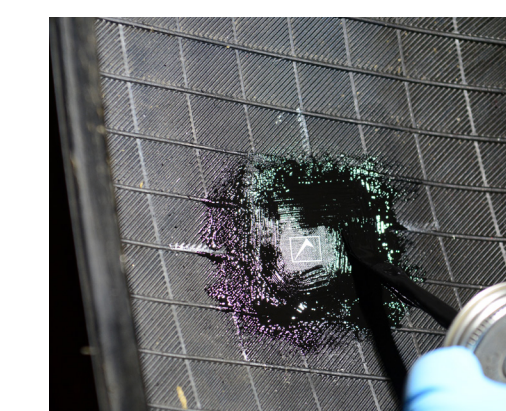
13. Apply a thin coat of quick dry patch cement to buffed area using a circular brushing pattern.
Allow 30-45 seconds to air dry.



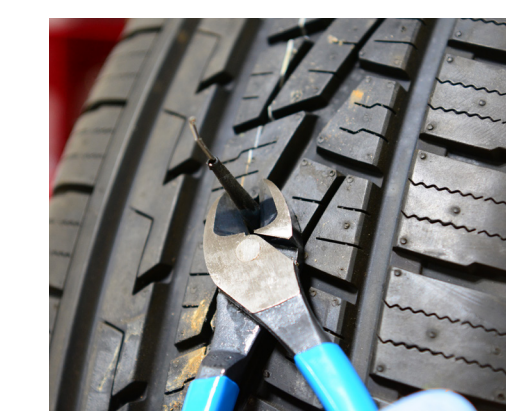
14. Firmly apply a universal patch by centering it over the plug stem.
Remember, avoid touching the gum cushion area with your fingers.



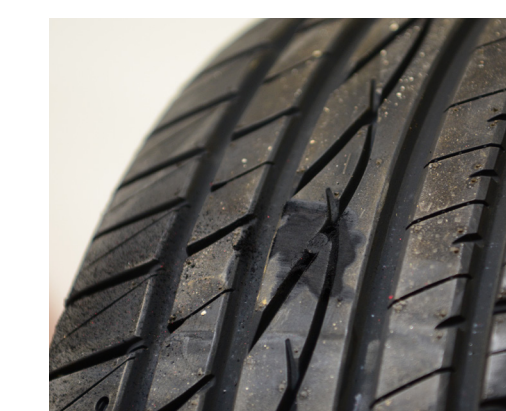
15. Use the ball bearing stitcher to stitch the patch from the center out and again at 90° to remove air bubbles. Then, remove the plastic film from the patch.



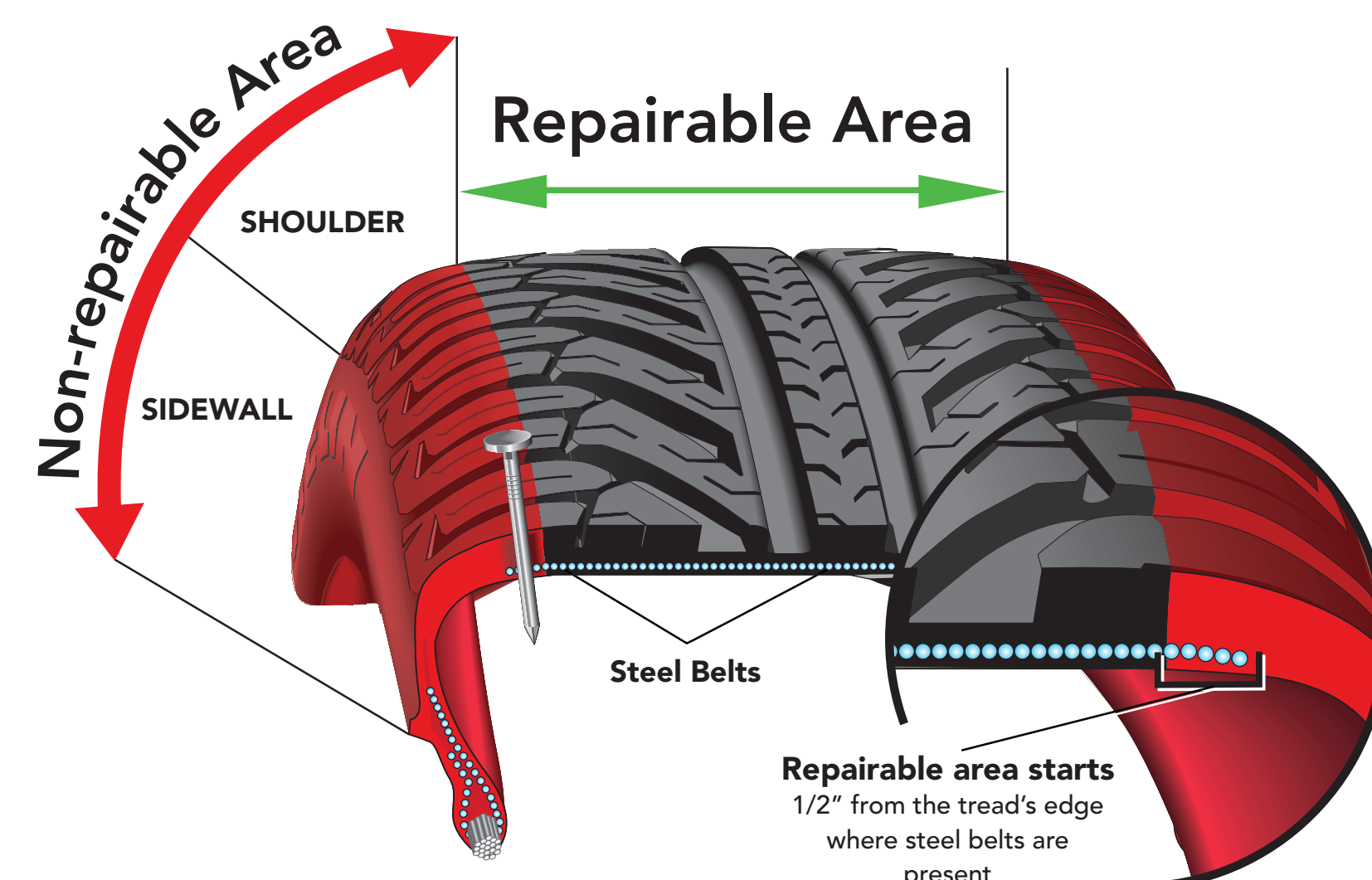
16. Apply repair sealer over the entire buffed area and the edges of the patch, leaving the center of the patch clear to expose the "Quality Checkmark."



17. Use the diagonal cutters to cut the plug stem on the outside of the tire flush with the surface of the tread.
Remember, do not pull on or stretch the plug stem before cutting.



18. Discard all remaining portions of the plug stem.
NEVER attempt to reuse the excess plug stem.



Non-Repairable Conditions:

- Injury 1/4" or larger
- Injury overlaps an existing repair
- Tread Depth 2/32" or less
- DOT 10 years or older
- Non-USTMA repair
- Outside of repairable areas
- Three or more existing repairs
- A Failed Repair



Adjustable - Return to manufacturer



Replace

Disconnect air from tool when changing cutter or rasp.

