

## Technical Bulletin – Wheel Advisory

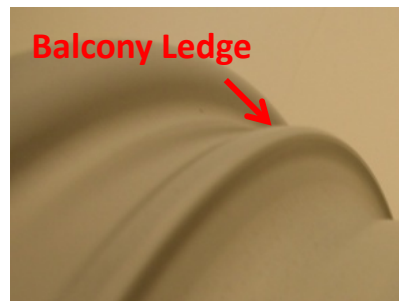
---

### Introduction

Some types of OE wheels are difficult to service. This is due to unusual designs in wheel contours and bead humps on the barrel.

Service Techs find these four vehicles particularly difficult to service:

- Mercury Mountaineer 18" OE Wheels (2005 & newer)
- Jeep Rubicon 16X8 OE Wheels (2003-2006)
- Land Rover / Range Rover 16X8 OE Wheels (2006 & older)
- Hyundai Sonata 17X6.5 OE Wheels (2006-2009)



### Mercury Mountaineer 18" OE Wheels (2005 and newer)

The front bead hump has a ridge on the balcony ledge which can cause bead damage when mounting.

- Tests were conducted where several types of tires were mounted and inflated on the OE wheels. During the test, we were not able to get a tire to seat without damaging the bead.
- The only tire we were able to seat at (50psi) was the original equipment Michelin. After mounting we found that it had a damaged bead.



Contour of bead hump



Front view



Damage to the bead from mounting

### Recommendation:

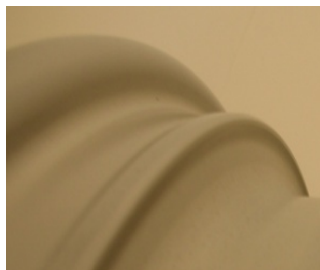
**Do not service these wheels. Sell the customer an alternate set of wheels.**

---

**Jeep Rubicon  
16X8 OE  
Wheels  
(2003-2006)**

The front bead hump has a ridge on the balcony ledge which can cause bead damage when mounting.

- Test were conducted where several types of tires were mounted and inflated on the OE wheels.
- During testing, the only tire we were able to mount was the Goodyear MTR that came stock on the vehicle.



Contour of bead hump



Front view



Damage to the bead from mounting

**Recommendation:**

**Only mount the OE tire on these wheels. (Goodyear MTR)**

**Land Rover /  
Range Rover  
16X8 OE  
Wheels  
(2006 & older)**

These wheels feature unusual asymmetrical bead hump designs. This bead hump causes a ridge on the balcony ledge that is more aggressive on one half of the wheel than the other on the front. The rear bead hump also is asymmetrical and creates a similar ridge.

- Test were conducted where several types of tires were mounted and inflated on the OE wheels.
- During testing, the only tire we were able to mount was the Michelin tire that came stock on the vehicle.



Left Front



Right Front



Left Rear



Right Rear

*Continued on next page*

*Continued from previous page*



Damage to the bead from mounting

**Recommendation:** Only mount the OE tire on these wheels.  
(OE Michelin or a comparable Michelin tire)

---

**Hyundai  
Sonata 17X6.5  
OE Wheels  
(2006-2009)**

Unusual front bead hump design may cause damage to tire if high bead seat pressure is required.



Contour of Bead Hump



Front View

**Recommendation:**

**Use caution when seating the beads on this wheel. If you cannot seat the beads, select a different manufacturer of tire. (Michelin, Hankook, and Kumho tires on this wheel.)**

---

**Contact**

For more information, please contact Gary Ruede at [gary.ruede@discounttire.com](mailto:gary.ruede@discounttire.com).

---