

REVVO TIRE SENSOR INSTALLATION PROCESS

Pre-Buffer

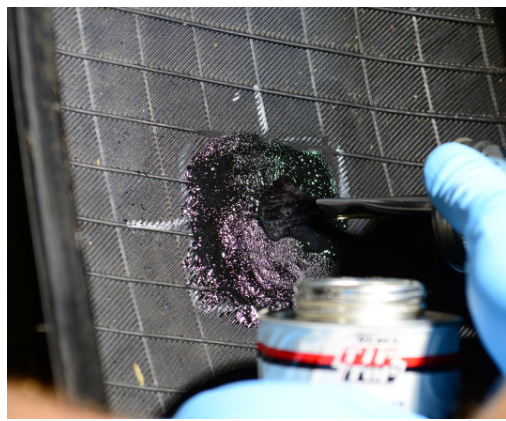
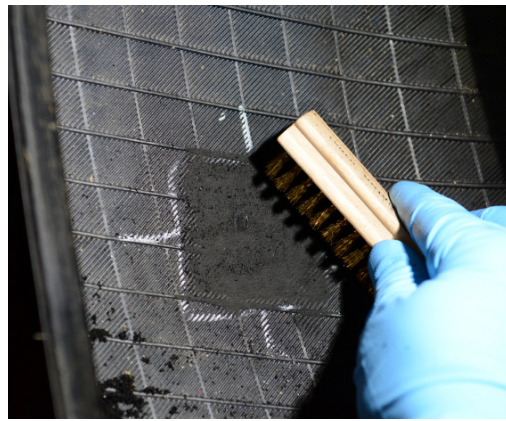
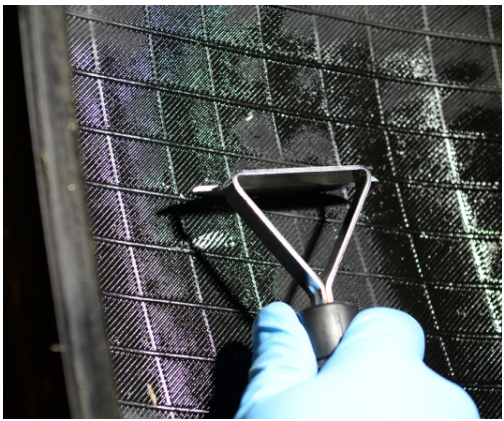
Buff

Brush

Vacuum

Quick Dry Cement

1. Prepare an area in the center of the tire like you would when repairing an injured tire. **The buffed area should be a 4x4 inch square**, big enough for the tire sensor dock.



2. Remove red wrapper from docking patch.

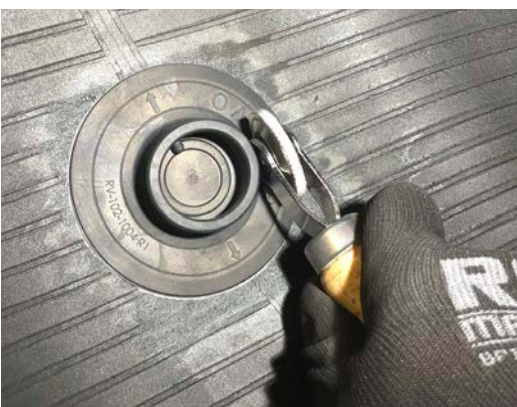


3. Place the docking patch into the tire with the **arrows pointing vertically along the center of the tire**

Remember, do not lay the dock down with the arrows pointing towards the sidewalls.



4. Press on docking patch with handle of ball bearing stitcher to secure.



5. Stitch the docking patch to the tire using the ball bearing stitcher in an outward motion all the way around the patch.

The docking patch is now installed.

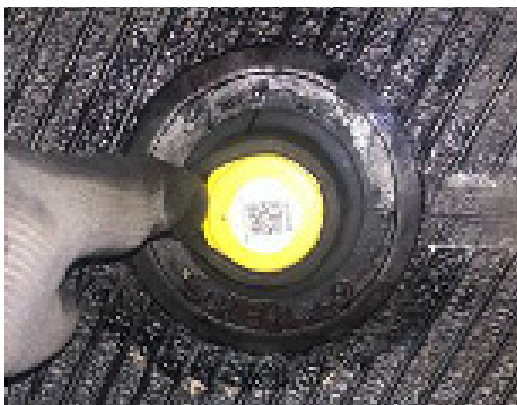


6. Remove the QR Code label from the sensor and place it in the appropriate area.

Refer to the QR Code Placement section below.



7. Take the yellow sensor and line up the groove with the sensor dock notch.



8. Press on the sensor with your fingers until the lip of the rubber docking patch completely covers the edge of the sensor.



9. Seal the edges of the dock and cover any buffed area with repair sealer.

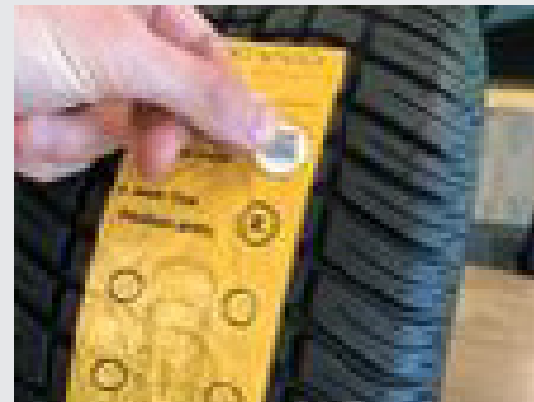
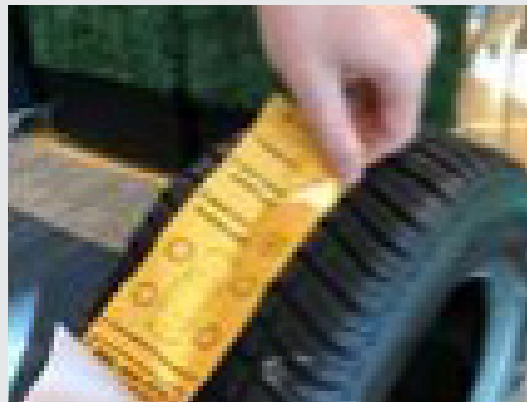


10. The sensor is now fully seated into the dock. The lip of the cradle should completely cover the lower edge of the sensor.

QR Code Placement:

Loose Assemblies:

1. Firmly apply the RTD sticker (orange label) to the loose assembly/carry out tire.
2. Take the QR code label from the sensor and apply it to the RTD label (the orange sticker).

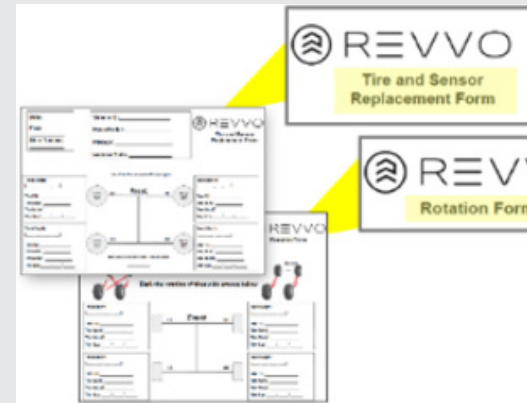


On-Vehicle Servicing:

1. Identify what services are required and if a data sheet is required. If you are doing any of the following, you will need to complete a Revvo data sheet:
 - Initial install of Revvo tire sensor
 - New tire replacement
 - Tire rotation
2. If replacing a tire, transfer the sensor from the old tire to the new tire.
3. If a data sheet is required:
 - Take the QR code label from the sensor and apply it to the Revvo data sheet.

4. Once installation is complete:

- Apply the Revvo Remote Tire Monitoring sticker to the vehicle door jamb (when applicable for on-vehicle servicing).
- Fill out and send the Revvo data sheet.



Disconnect air from tool when changing cutter or rasp.

